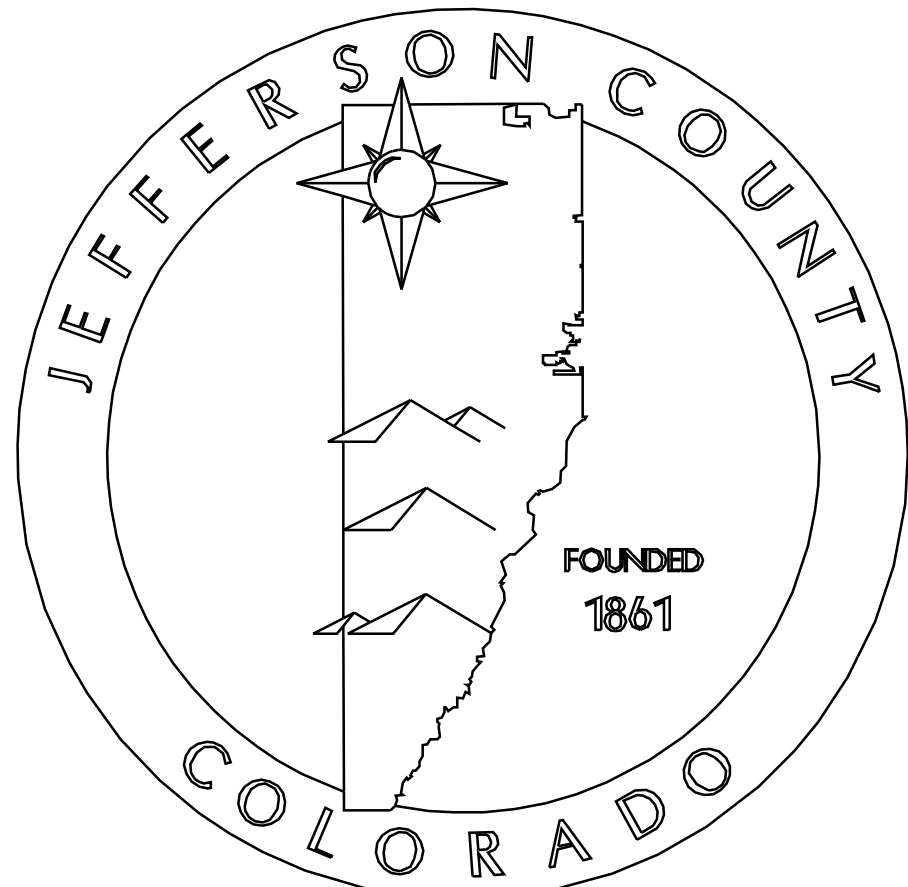
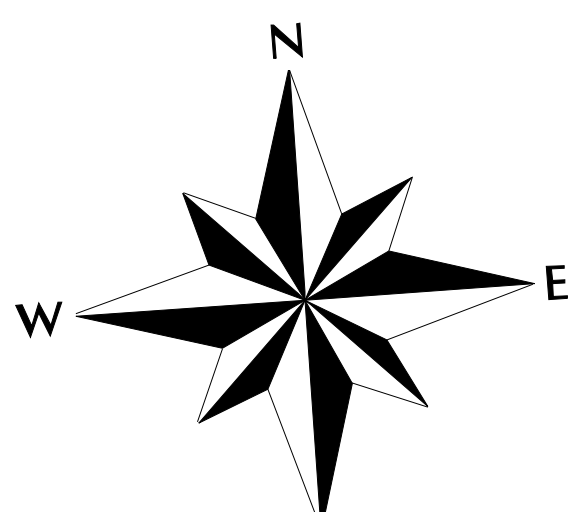


MAP 51-041



Jim Everson
Assessor



THIS MAP IS ROTATED 4 DEGREES FROM NORTH
FEET

0 100 200 300
(Initially plotted at 1" = 100', or 1:1200)

R 72 W	R 71 W	R 70 W	R 69 W		
22	21	20	29	T 2 S	06 05 04 03 02 01
32	31	30	39	T 3 S	07 08 09 10 11 12
42	41	40	49	T 4 S	18 17 16 15 14 13
52	51	50	59	T 5 S	19 20 21 22 23 24
62	61	60	69	T 6 S	30 29 28 27 26 25
72	71	70	79	T 7 S	31 32 33 34 35 36
82	81	80		T 8 S	
92	91	90		T 9 S	
02	01			T 10 S	

SECTION INDEX

2	1
NW	NE
3	4
SW	SE

QUARTER SECTIONS

TOWNSHIP INDEX (State Assigned 4-Digit Township Code: 2083)
Parcel Identification Numbers (PINs) in Jefferson County are based on the township, section, and quarter section the parcel falls within. PINs follow the pattern TSSQ-BB-LLL. TT is the two-digit township code; SS is the two-digit section number; Q is the quarter section code; BB is the two-digit parcel block number; LLL is the three-digit parcel lot number. When a parcel falls within two or more quarter sections, in most cases the PIN will be based on the quarter section (along with its associated township and section) with the most area within the parcel. Township codes, section numbers, and quarter section codes can be found in the indices above. Parcel block numbers are found enclosed in hexagons (⬡) on the map. Parcel lot numbers are found enclosed in ovals (⊖) on the map.

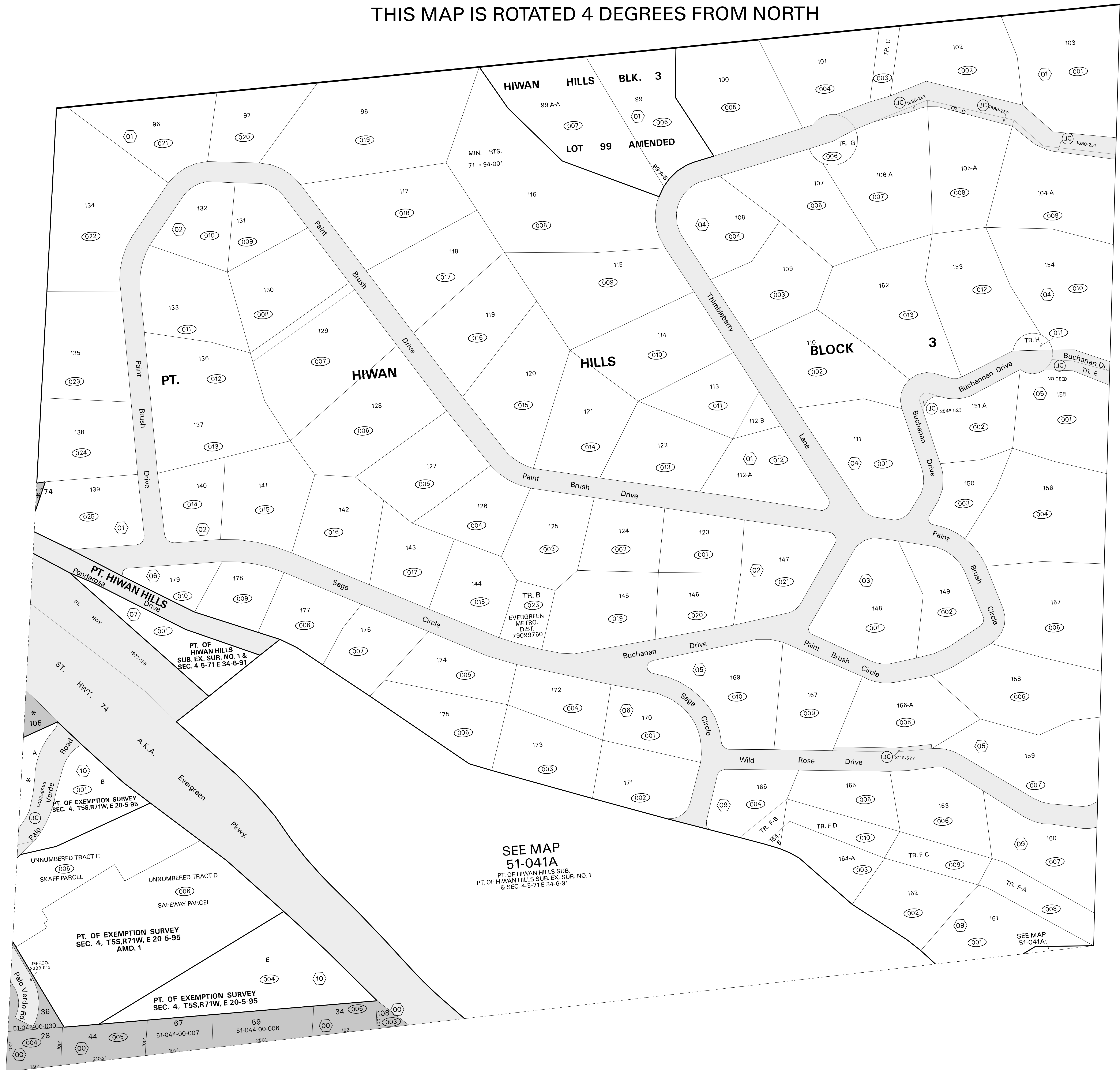
DISCLAIMER

Caution: This map is for assessment purposes only. It is not necessarily accurate by surveying standards. **DO NOT USE FOR LEGAL CONVEYANCE.** Subsequent editions with updated information will be published on a continual basis. Therefore, the information contained on this map may be modified or altered.

KEY	
	Section Lines
	Tie Bar Lines
	Subdivision Lines
	Quarter Section/Tie Bar Lines
	Township Boundaries
	County Boundaries
	All Others
	Right of Way, Water & Rail Road (Areas without parcel numbers)
	Metes & Bounds Related (Block numbers 99 & 00)

This map was last updated on Wednesday September 30, 2009 at 4:35 PM.
<http://www.co.jefferson.co.us/assr/pdi/map51-041.pdf>
Projection Information:
State Plane Coordinate System
Colorado Central Zone (3476)
North American Datum 1983 (NAD83)
GRS1980 Spheroid, Units Feet

THIS MAP IS ROTATED 4 DEGREES FROM NORTH



SEE MAP 51-041A
PT. OF HIWAN HILLS SUB.
PT. OF HIWAN HILLS SUB. EX. SUR. NO. 1
& SEC. 4-5-71 E 34-6-91

SEE MAP 51-041A